

LANDSCAPING

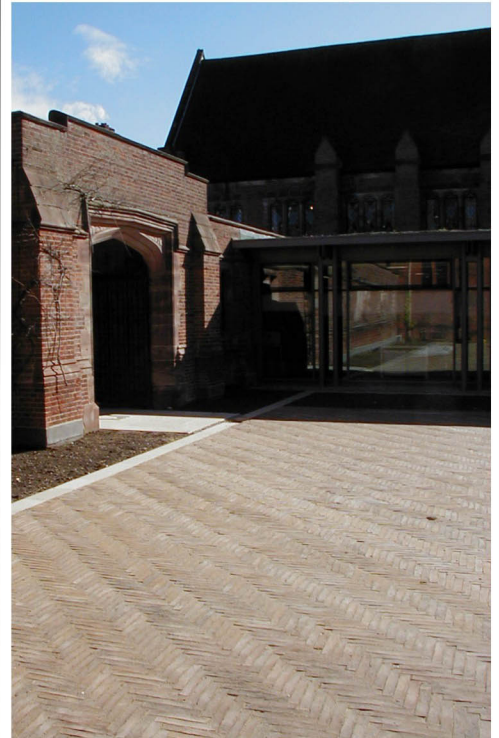
Number 2

COLEFORD BRICK & TILE

PROPERTY ENHANCEMENT USING GENUINE HANDMADE PRODUCT

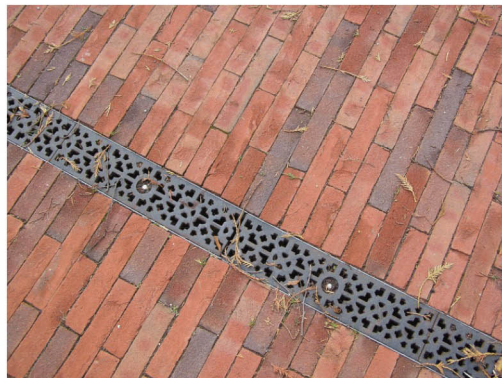


CAMBRIDGE COLLEGE PAVING PROJECT



COURTYARD MAKEOVER

A privately owned country retreat deep in the heart of Dorset has undergone a major makeover which includes the extensive front courtyard. Both clay floor tiles and pavers in subtle shades and blends have been combined to great effect.



This project required a considerable amount of groundwork preparation before the pavers could be laid. The architect commissioned to design the courtyard had decided that each paver was to be individually made to a special size of 280 x 50 x 50mm. Careful consideration was then given to the choice of colours, this involved a number of visits to the site with the client and architect with numerous sample panels of different blends. However, the finished area you will agree is a true testament to the aesthetic qualities of genuine handmade clay pavers.

Cotswold Buff pavers were used in a simple herringbone pattern. uninterrupted over the entire area, this pattern creates the illusion of a great space.



CLAY PATH EDGINGS

